

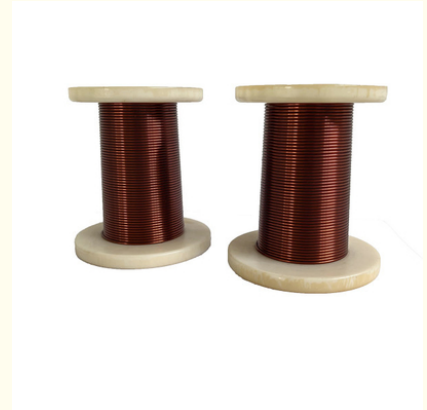


220°C Enamelled Rectangular Copper Winding Wires HEVW-220 In Drive Motor And Transformer

Our Product Introduction

Basic Information

- Place of Origin: China
- Brand Name: PEWSC
- Certification: UL,ROHS
- Model Number: HEVW-220
- Minimum Order Quantity: The MOQ Varies According to the Size of the Specification
- Price: Copper Price plus Processing Fee plus Freight
- Packaging Details: Carton
- Delivery Time: 3-5 Work Days
- Payment Terms: T/T 100% Payment before Shipment
- Supply Ability: Delivery 10-15 Days after Next Order



Product Specification

- Product Type: HEVW-220
- Color Option: Natural Yellow
- Conductor Material: Copper
- Shape: Flat
- Application: Motor, Transformer
- Color: Natural Copper
- Customization: Available
- Insulation Material: Enameled
- Temperature Resistance: 220°C
- Conductor Diameter: Customizable
- Highlight: **Drive Motor Rectangular Copper Winding Wires, Enamelled Rectangular Copper Winding Wires, Transformer Rectangular Copper Winding Wires**



for more products please visit us on enamel-wire.com

Product Description

1. Superior Electrical Conductivity

High - Purity Conductors: Typically made from copper or aluminum with high electrical conductivity, it minimizes power loss and ensures efficient current transmission.

Low Resistance: The large cross - sectional area (for a given wire gauge) reduces ohmic resistance, making it suitable for high - current applications.

2. Customization Options

Variable Dimensions: Available in various aspect ratios (width to thickness) to meet specific design requirements.

Coating Thickness: The enamel layer can be adjusted for different voltage ratings and insulation needs.

3. Excellent Insulation Performance

Enamel Coating: The wire is coated with a thin, uniform layer of enamel (such as polyurethane, polyester, or polyimide), which provides reliable electrical insulation.

Heat Resistance: The enamel can withstand high temperatures (ranging from 130°C to 240°C, depending on the type), ensuring stability in high - heat environments.

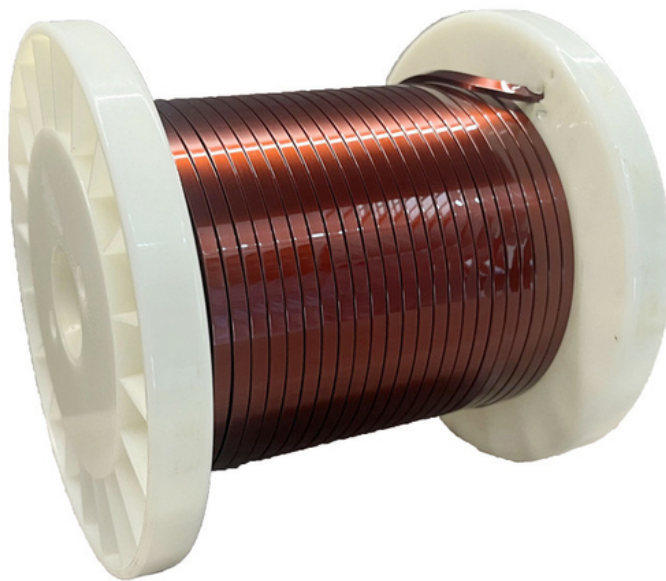
Mechanical Protection: The coating also resists abrasion, moisture, and chemical corrosion, extending the wire's service life.

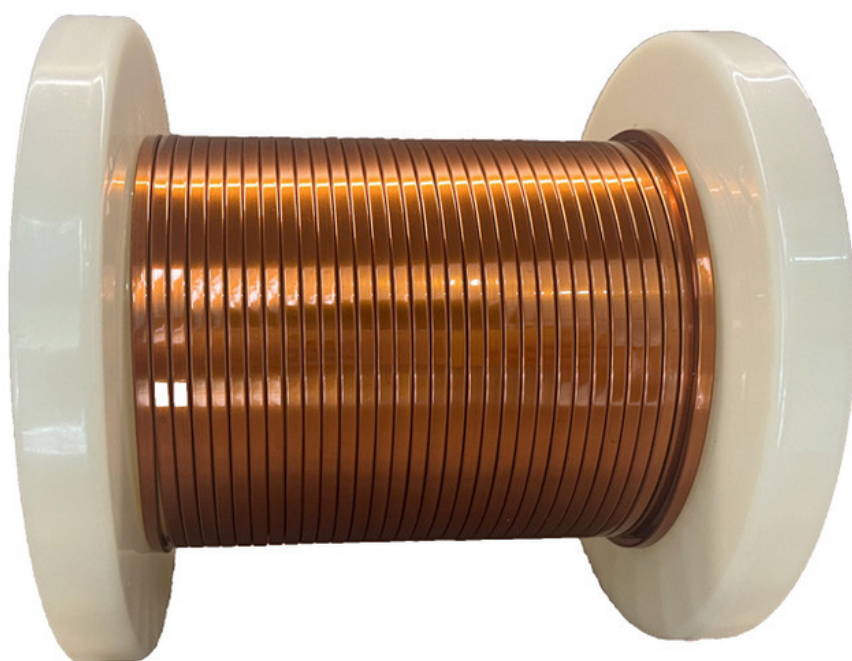
4. Environmental and Safety Features

Lead - Free and RoHS Compliant: Many enamelled flat wires comply with environmental standards, reducing harmful substance emissions.

Flame Retardancy: Some coatings offer flame - retardant properties, enhancing safety in critical applications.

In summary, enamelled flat wire combines efficient space utilization, reliable insulation, and high electrical performance, making it a preferred choice for advanced electrical and electronic designs that demand compactness and durability.





Pacific Electric Wire & Cable (Shenzhen) Co., Ltd.



13265485132



sales09@pewsc.com



enamel-wire.com

