



200°C Corona-resistance Enamelled rectangular copper winding wires BHAIC in general heat resistance

Our Product Introduction

Basic Information

- Place of Origin: China
- Brand Name: PEWSC
- Certification: UL,ROHS
- Model Number: BHAIC
- Minimum Order Quantity: The MOQ Varies According to the Size of the Specification
- Price: Copper Price plus Processing Fee plus Freight
- Packaging Details: Carton
- Delivery Time: 3-5 Work Days
- Payment Terms: T/T 100% Payment before Shipment
- Supply Ability: Delivery 10-15 Days after Next Order



Product Specification

- Color Option: Natural Red
- Conductor Type: Rectangular
- Temperature Rating: 200°C
- Conductor Material: Oxygen Free Copper
- Insulation Type: Polyester, Polyurethane, Polyimide, Etc.
- Enamel Film Flexibility: Widing With 1 Times Thickness
- Insulation Material: Enameled
- Customization: Available
- Size: Customizable



for more products please visit us on enamel-wire.com

Product Description

Enamelled flat wire, also known as rectangular enamelled wire, is a type of electrical conductor with a rectangular cross - section, coated with an insulating enamel layer. It is widely used in various electrical and electronic applications due to its unique characteristics. Here are the main features of enamelled flat wire:

1. Special Geometric Shape

Rectangular Cross - Section: Unlike round wires, it has a flat and rectangular shape, which allows for more efficient space utilization in winding applications.

Higher Fill Factor: The flat design enables tighter packing in coils, increasing the number of turns per unit area and improving the power density of electrical devices (e.g., transformers, motors, and generators).

2. Excellent Insulation Performance

Enamel Coating: The wire is coated with a thin, uniform layer of enamel (such as polyurethane, polyester, or polyimide), which provides reliable electrical insulation.

3. Space - Saving and Compact Design

Reduced Volume: The flat shape helps reduce the overall size and weight of electrical components, which is crucial for miniaturized electronics and high - density applications.

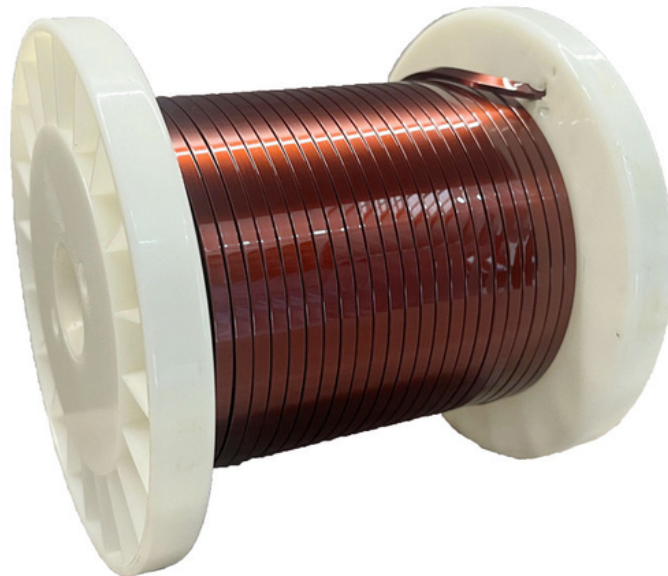
Improved Heat Dissipation: The larger surface area of the flat wire facilitates better heat dissipation, enhancing the thermal management of devices.

4. Versatility in Applications

Widely Used in Motors: Ideal for stator and rotor windings in electric motors, where space efficiency and high power output are essential.

Transformers and Inductors: Suitable for high - frequency transformers and inductors, minimizing core losses and improving energy efficiency.

Consumer Electronics: Used in compact devices like laptops, smartphones, and home appliances to save space and reduce weight.





Pacific Electric Wire & Cable (Shenzhen) Co., Ltd.



13265485132



sales09@pewsc.com



enamel-wire.com

